



Project:

Item Number:

Quantity:

**DROP-IN CHAFERS: NEW YORK, NEW YORK® AND WINDWAY SERIES®**



**MODELS:**

- 46258 - 9 Qt. (8.6 L) Rectangular Drop-in Chafer (New York, New York®)
- 46268 - 6 Qt. (5.4 L) Round Drop-in Chafer (New York, New York®)
- 46295 - 9 Qt. (8.6 L) Rectangular Drop-in Chafer (Windway®)
- 46298 - 6 Qt. (5.4 L) Round Drop-in Chafer (Windway®)

**FEATURES**

- 18/8 stainless steel dripless water pan redistributes condensation back to the water pan, not the food.
- 18/8 mirror-finished stainless channeled removable cover redistributes condensation from the cover to the dripless water pan. Removes easily for cleaning.
- Unique hinge assembly offers 3 positions: closed, 90 degree, and full open. Adjust with simple pressure, no levers or other mechanisms. Hinge assembly includes left and right hinge. Adjustable tension (underneath hinge). Push teeth away on right side to increase tension, toward you on left side. Removes easily with 2 screws for replacement. One hinge kit for all chafers.
- Mirror-finished 18/8 stainless steel construction. Low profile, elegant, and tough.
- Special tray to accept Vollrath Universal Electric Heaters (sold separately). Universal heater does not connect to water pan, allowing water pan removal for draining and cleaning. Universal Electric Heaters available in standard 120V AC, or 230V AC international versions. Heaters come standard with 6 ft. (183 cm) cord.

**DESCRIPTION**

The New York, New York® and Windway® series rectangular and round drop-in chafers are designed for use in dining room serving lines in either stationary or mobile serving equipment. Available in rectangular or round versions, all units are fully retractable allowing serving from both sides. They feature Vollrath's unique dripless water pan and channeled cover that keeps condensation away from the food and table top. For use only with Vollrath's Universal Electric Heaters, which allow removal of the water pan for draining and cleaning.

Vollrath Drop-in Chafers come complete with the 18/8 mirror-finished chafer, 18/8 dripless water pans with mirror-finished rim, 18/8 food pans (including the SUPERPAN 3 in the rectangular chafers), clips to attach the chafer to the bottom of the counter-top, an attached tray to hold Vollrath Universal Heaters, and complete instructions.

Retrofit kits are available to fit new Vollrath drop-in chafers to most existing installations. See back page for dimensions.

**Agency Listings - Vollrath Universal Heaters**



|                  |
|------------------|
| <b>Approvals</b> |
| <b>Date:</b>     |



www.vollrathco.com

The Vollrath Company, L.L.C.  
 1236 North 18th Street  
 Sheboygan, WI 53082-0611  
 U.S.A.  
 Main Tel: 800.624.2051  
 Service Tel: 800.628.0832  
 FAX: 800.752.5620

Vollrath of Canada, Co.  
 Tel: 800.695.8560  
 FAX: 800.752.5620

Drop-in Chafers: New York, New York® and Windway Series®

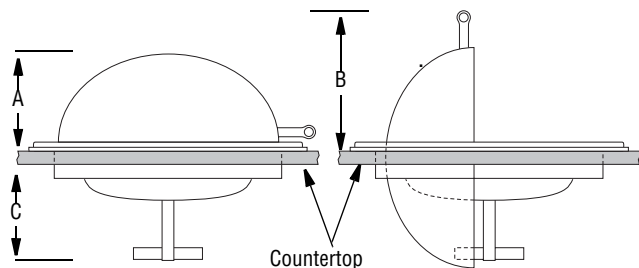
The Vollrath Company, L.L.C.

# DROP-IN CHAFERS: NEW YORK, NEW YORK® AND WINDWAY SERIES®

- MODELS:** 46258 - 9 Qt. (8.6 L) Rectangular Drop-in Chafer (New York, New York®)  
 46268 - 6 Qt. (5.4 L) Round Drop-in Chafer (New York, New York®)  
 46295 - 9 Qt. (8.6 L) Rectangular Drop-in Chafer (Windway®)  
 46298 - 6 Qt. (5.4 L) Round Drop-in Chafer (Windway®)

## DIMENSIONS

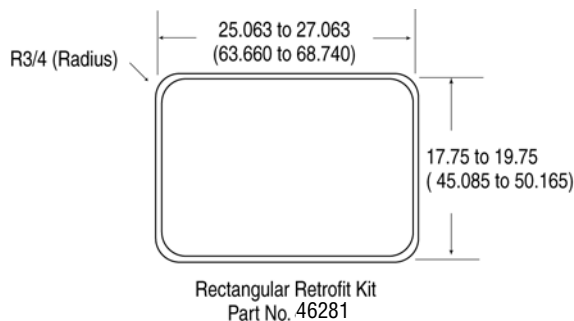
☐ Dimensions in inches (centimeters)



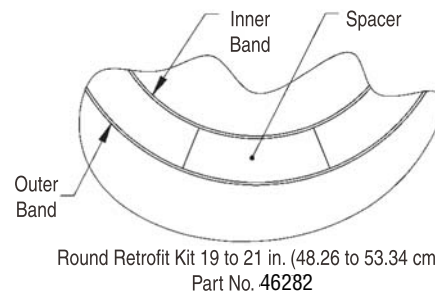
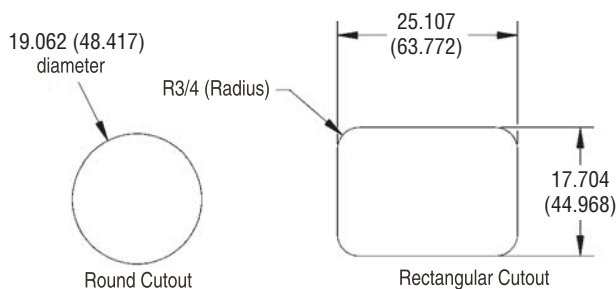
| Chafer      | Distance Above Countertop |              | Distance Below Countertop (C) |
|-------------|---------------------------|--------------|-------------------------------|
|             | Closed (A)                | Open (B)     |                               |
| Round       | 8.5 (21.59)               | 11.0 (27.94) | 8.0 (20.32)                   |
| Rectangular | 8.0 (20.32)               |              |                               |

### Retrofit Installations:

Note, Retrofit Kits will work with most replacements but not all. Measurements must be taken to insure proper fit.



### Cutouts for New Installations:



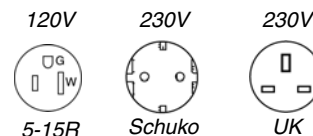
## IMPORTANT

- ☐ Always measure chafer upon arrival and mate with countertop before cutting the hole. Slight differences in dimensions with chafers can happen and it is best to mate the chafer to the actual installation.
- ☐ Reinforce countertops near the cutout (from below). This insures that the countertop remains flat and can support chafers.
- ☐ Attach chafer to countertop using provided clips. From underside, remove 2 nuts under front chafer bracket. Slide clips on and reattach nuts. Use provided screws to anchor chafer to countertop. (Complete instructions provided with chafer).
- ☐ Outlets will need to be made available within 6 feet (183 cm) of the chafer heater.
- ☐ Turn off universal heater when not in use. Chafer heater will be very hot. Do not touch heater directly. Never use fuel cups under a countertop with drop-in chafers.
- ☐ Always place warm water in water pan when starting up to minimize heat-up times. Use "one" universal heater. Generally the heater set at high will work well with rectangles, and low for round chafers.

## ELECTRICAL SPECIFICATIONS - VOLLRATH UNIVERSAL HEATERS

| Model | kW Rating | Volts   | Nominal Amps | Plug       |
|-------|-----------|---------|--------------|------------|
| 46060 | 160/275   | 120V AC | 2.3          | NEMA 5-15P |
| 46110 | 120/230   | 230V AC | 1.0          | Schuko     |
| 46115 | 120/230   | 230V AC | 1.0          | UK         |

### Receptacles



www.vollrathco.com

The Vollrath Company, L.L.C.  
 1236 North 18th Street  
 Sheboygan, WI 53082-0611  
 U.S.A.  
 Main Tel: 800.624.2051  
 Service Tel: 800.628.0832  
 FAX: 800.752.5620

Vollrath of Canada, Co.  
 Tel: 800.695.8560  
 FAX: 800.752.5620