



JOB:

Item No.:



Model 300

FOOD WASTE DISPOSER 3 HP - 3 Phase

CORROSION RESISTANT BODY

Permanent molded from heat treated aluminum alloy.

PATENTED AIR/WATER SEAL

Protects the motor from damage by water.

TAPERED ROLLER BEARING

Provides longer motor life, quiet operation and shock absorbing.

WATER COOLED MOTOR

Provides maximum efficiency and longer life.

QUIET OPERATION

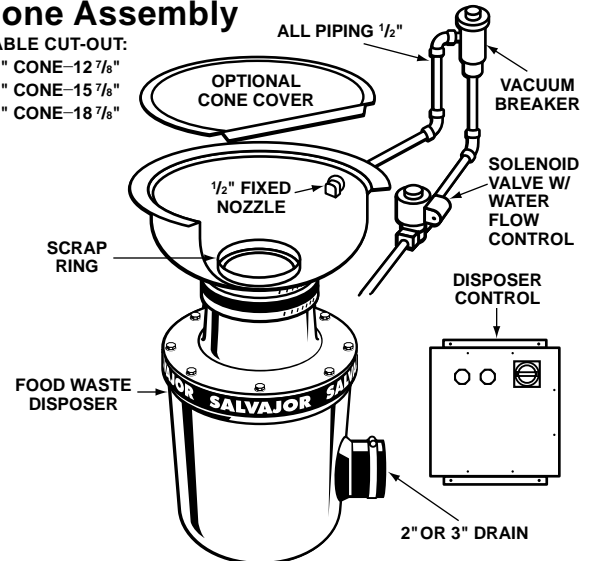
Extra thick rubber mounting adaptor and drain outlet isolates sound and eliminates vibration.

WASTE MIXING CHAMBER

Extra large to ensure proper mixture of water to waste.

Cone Assembly

TABLE CUT-OUT:
12" CONE-12 7/8"
15" CONE-15 7/8"
18" CONE-18 7/8"



NOTE: INSTALL PER ALL APPLICABLE CODES

NEMA 4X Watertight Controls



MSS



MRSS



ARSS-2



ARSS

FULL LOAD AMPS

<input type="checkbox"/>	208 Volts	3 Phase	8.8 Amps
<input type="checkbox"/>	230 Volts	3 Phase	8.0 Amps
<input type="checkbox"/>	460 Volts	3 Phase	4.0 Amps

Salvajor Model 300

Food Waste Disposer 3 HP – 3 Phase

DETAILS AND DIMENSIONS

SPECIFICATIONS:

MOUNTING – Rubber adaptor above grind chamber and rubber drain outlet isolates sound and eliminates vibration. No metal to metal contact.

EXTERIOR HOUSING – Permanent molded from heat treated, corrosion resistant aluminum alloy then computer machined to a smooth polished finish. Paint free.

SHREDDER – 9 inch diameter, machined high strength, wear resistant hardened carbide alloy.

ROTOR – 9 inch diameter with 4 cutter bars, machined high strength, wear resistant hardened carbide alloy.

MOTOR – 3 HP totally enclosed. Fan cooled and water cooled for efficiency and longer life. Built-in manual reset thermal overload protection. Available in 208-230/460 volts, 60 cycle, 3 phase.

BEARINGS – Tapered roller (top)
Sealed ball (bottom)

SEAL – Patented Air/Water Seal and secondary Teflon Lip Water Seal.

WATER REQUIREMENT – 8 gallons of cold water per minute.

WASTE OUTLET – Rubber drain accepts 2" piping or 3" piping by removing drain insert.

DUAL DIRECTION GRINDING – Designed to operate in either direction. Direction of rotation can be controlled when installed with automatic reversing controls. *Reversing rotation can double cutting teeth life.*

LEG SUPPORT – Single leg, adjustable.

ASSEMBLIES: (See Specification Sheet)

CA – Cone Assembly with 12", 15" or 18" Cone

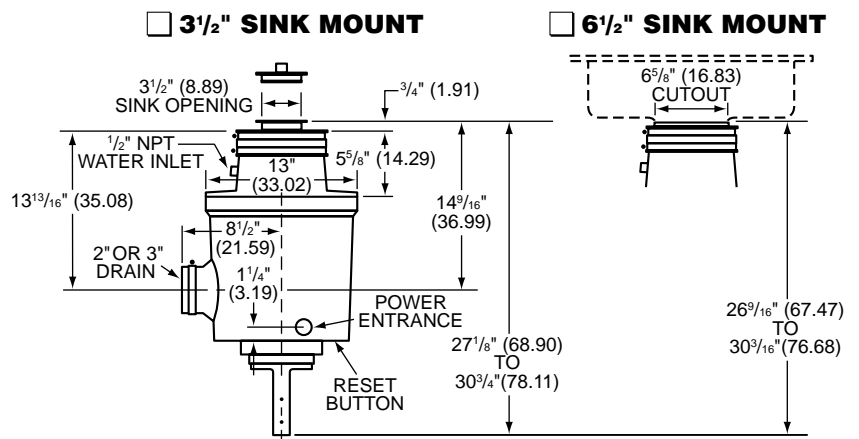
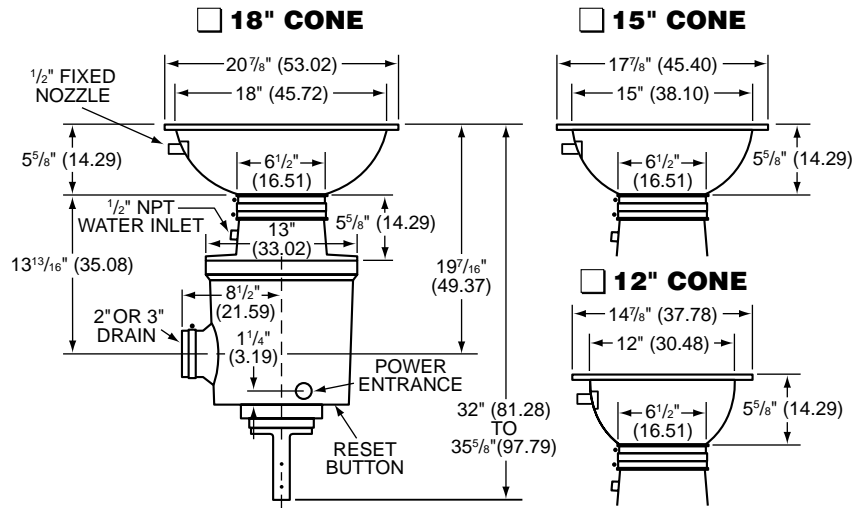
SA – Sink Assembly with 3 1/2" or 6 1/2" Sink Collar

DISPOSER CONTROLS: (See Specification Sheet)

MSS: (Non Reversing)

MRSS: (Manual Reversing)

ARSS-2, ARSS: (Automatic Reversing)



NOTE: Dimensions in parenthesis are in centimeters
(Specifications subject to change without notice)

SAMPLE SPECIFICATION			
300-CA-18	ARSS	(230/60/3)	
Model	Cone Size	Disposer Control	Electrical Specs.
Assembly			
◆ SPECIFY EXACT OPERATING VOLTAGE ◆			



The Salvajor Company 4530 East 75th Terrace Kansas City, Missouri 64132-2081, USA

1-800-821-3136

(816) 363-1030

FAX: 1-800-832-9373

www.salvajor.com

Email: sales@salvajor.com

service@salvajor.com

Manufacturers of Commercial Food Waste Disposing Systems since 1944

Salvajor Model MRSS & MRSS-LD

MANUAL REVERSING

PRE-WIRED CONTROL PANEL FOR MODELS:

75 - 100 - 150 - 200 - 300 - 500 - 750

(Formerly Model WJ)

SPECIFICATIONS:

- NEMA 4X Stainless Steel Corrosion-Resistant Enclosure
- Manual Reversing Magnetic Contactors
- Start/Stop Push Buttons
- Forward/Reverse Switch
- Terminal Strip Connections

OPTIONAL:

- Line Disconnect (LD)



VOLTAGES AVAILABLE:

1-PHASE

115 VOLT, 208-230 VOLT

3-PHASE

208-230 VOLT, 460 VOLT*

*When over 250 volts, we recommend using Model ARSS-2 or ARSS with 24 Volt Control Transformer.

◆ SPECIFY EXACT OPERATING VOLTAGE ◆

ACCESSORIES AVAILABLE:

- #980104 Mounting Bracket for MRSS
- #980105 Mounting Bracket for MRSS-LD

(Specifications subject to change without notice)

SAFETY FEATURE:

The MRSS & MRSS-LD controls include an operator safety feature that prevents automatic starting of the disposer after a power interruption. To re-start the disposer, the operator must push the **START** button after positioning the selector switch in either **FORWARD** or **REVERSE**.

MODEL MRSS & MRSS-LD DISPOSER CONTROL

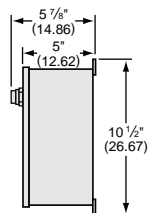
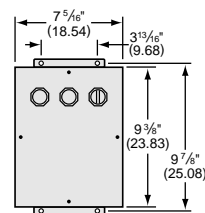
is for use with Salvajor Models:

75 - 100 - 150 - 200 -
300 - 500 - 750

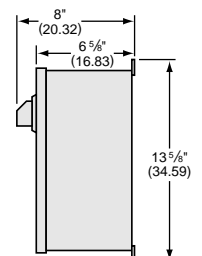
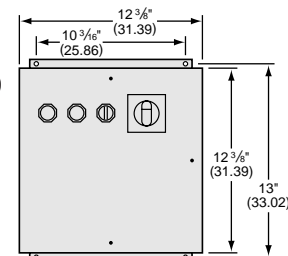
MRSS: 9 LBS. MRSS-LD: 17 LBS.



MRSS

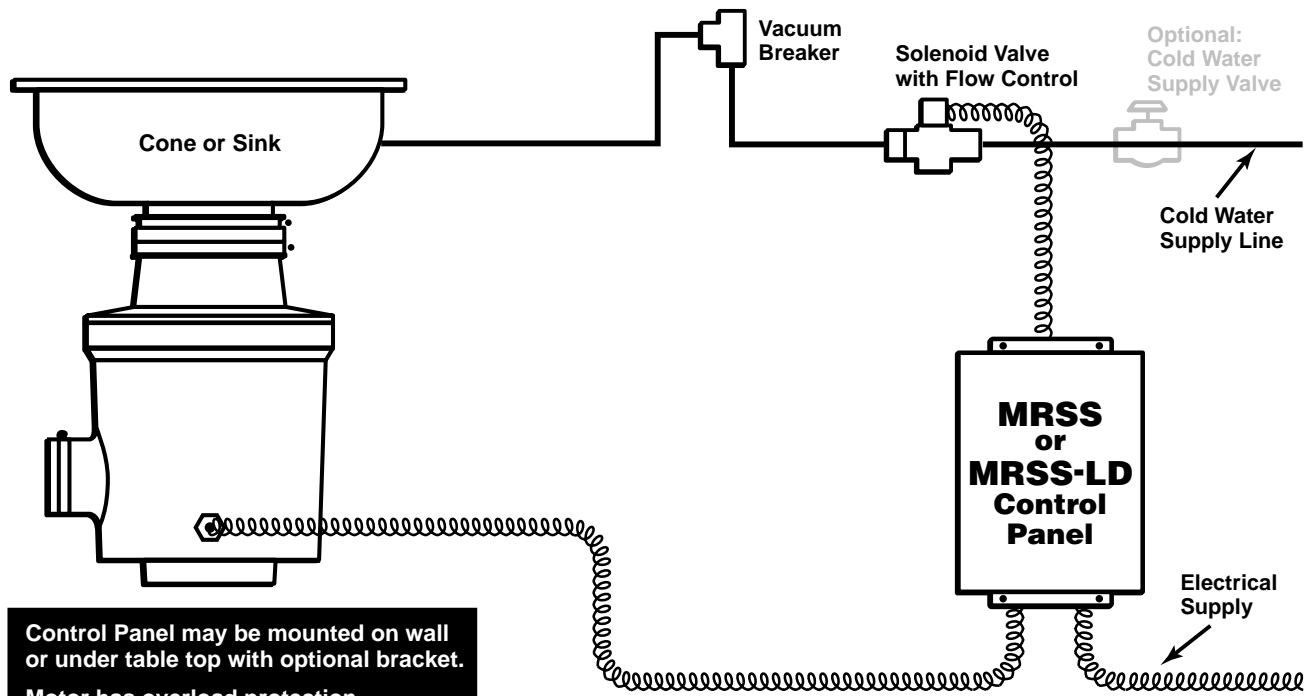


MRSS-LD



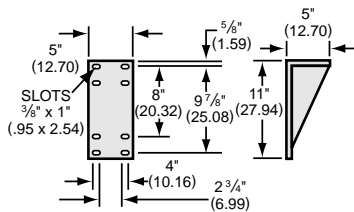
NOTE: Dimensions in parenthesis are in centimeters

Typical Installation Diagram of Salvajor Model MRSS & MRSS-LD Control Panel with Disposer

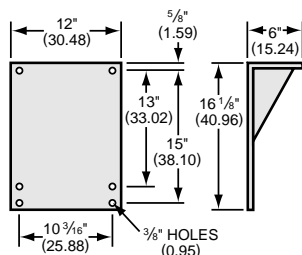


NOTE: INSTALL PER ALL APPLICABLE CODES

980104 MRSS Mounting Bracket



980105 MRSS-LD Mounting Bracket



NOTE: Dimensions in parenthesis are in centimeters

Item Numbers for Ordering

CONTROL MODEL	VOLTAGE	PHASE	ITEM NO.
MRSS	115	1	MRSS 4
	208 or 230	1	MRSS 5
	208 or 230	3	MRSS 7
	460*	3	MRSS 9
MRSS-LD	115	1	MRSSLD 4
	208 or 230	1	MRSSLD 5
	208 or 230	3	MRSSLD 7
	460*	3	MRSSLD 9

◆ SPECIFY EXACT OPERATING VOLTAGE ◆

*When over 250 volts, we recommend using Model ARSS-2 or ARSS with 24 Volt Control Transformer.



The Salvajor Company 4530 East 75th Terrace Kansas City, Missouri 64132-2081, USA

1-800-821-3136

(816) 363-1030

FAX: 1-800-832-9373

www.salvajor.com

Email: sales@salvajor.com

service@salvajor.com

Manufacturers of Commercial Food Waste Disposing Systems since 1944