



a Standex company

ITEM: _____ PROJECT NAME: _____ DATE: _____

CONVERTIBLE SERVICE OVER REFRIGERATED SELF-SERVE SPECIALTY MERCHANDISER

- MODEL **SSRC3652**
 SSRC5052
 SSRC5952
 SSRC7752



*Display a variety of products and serve more customers with presentation and value in mind.
Cases are available in lengths of 36", 50", 59", and 77".*

STANDARD FEATURES

Refrigerated Self-Serve Bottom Display

- Steel base construction with black exterior. Other finishes optional.
- Black interior, glass end panels.
- Horizontal shielded top light.
- Two-tier black display step.
- Thermometer.
- Condensate evaporator provided for a totally self-contained system.
- Easy clean, rustproof insulated evaporator coil compartment.
- Easily accessible light switch and adjustable power switch.
- Average case temperature of 38° to 40°F is maintained.

- Rear access to the refrigeration system for quick and easy service.
- R404 Refrigerant.
- Adjustable leg levelers.

Service Top Display

- Divided merchandise area. 3' only has one display area.
- Baffle system converts display from non-refrigerated to refrigerated.
- Clear glass rear sliding doors.
- Tempered lift-up thermopane front glass.
- Adjustable black wire shelf.
- Shielded top and shelf light.
- Thermometer.

CONVERTIBLE SERVICE OVER REFRIGERATED SELF-SERVE MERCHANDISER

OPTIONAL ACCESSORIES:

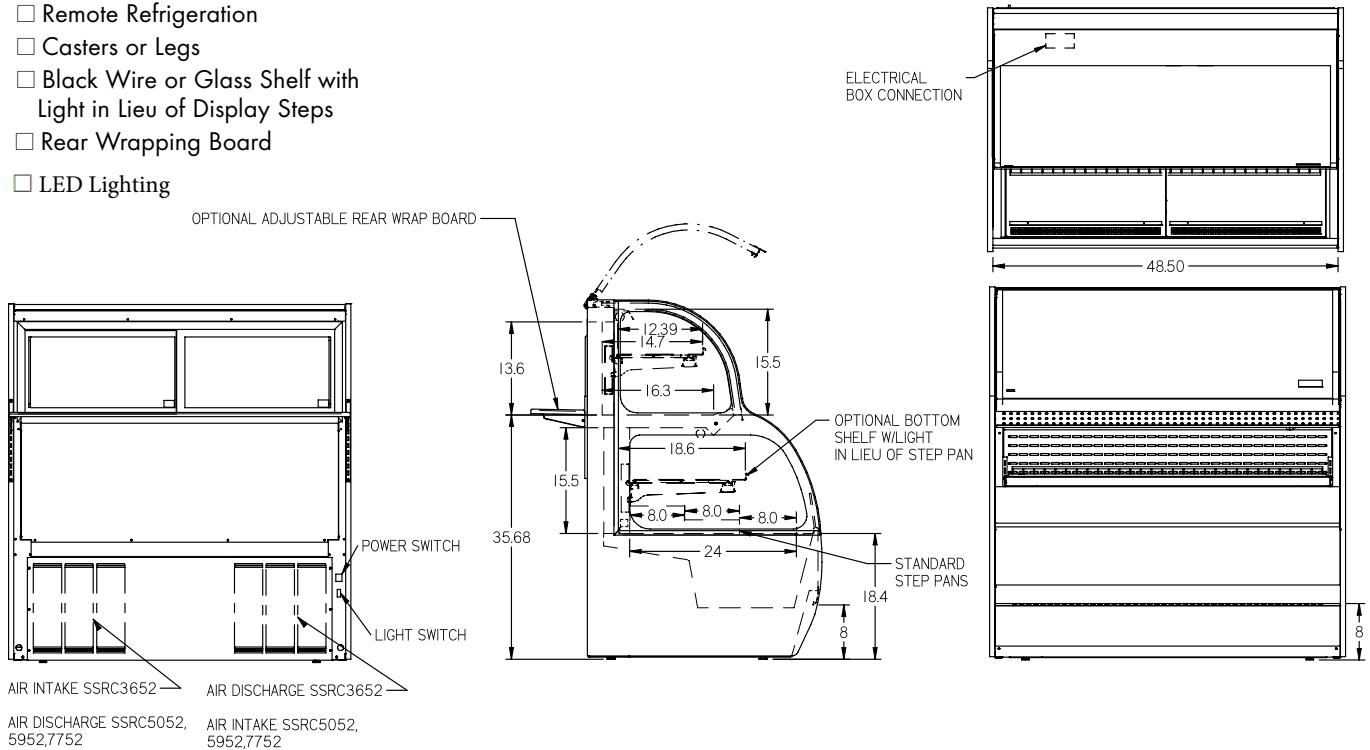
Reflective End Glass

For Self-Serve Refrigerated Base

- Special Finish
- Energy Saving Night Curtain
- Security Night Cover
- Solid Rear Sliding Access Doors for Bottom Section
- Cord & Plug (3652 = NEMA 5-20P, 5052 = NEMA 6-15P, 5952 & 7752 = NEMA 6-20P)
- Remote Refrigeration
- Casters or Legs
- Black Wire or Glass Shelf with Light in Lieu of Display Steps
- Rear Wrapping Board
- LED Lighting

For Service Top Display

- Reflective Rear Doors
- Glass Shelves
- LED Lighting



SPECIFICATIONS:

Model	Dimensions L W H	Shipping Weight (lbs)	Self-Contained with Condensate Pan	Remote 120/60/1
<input type="checkbox"/> SSRC3652	36" x 34" x 52"	590	120/60/1 • 1/3 HP • 15 AMPS	10 AMPS
<input type="checkbox"/> SSRC5052	50" x 34" x 52"	720	208-230/60/1 • 1/2 HP • 10 AMPS	10 AMPS
<input type="checkbox"/> SSRC5952	59" x 34" x 52"	780	208-230/60/1 • 1/2 HP • 12 AMPS	12 AMPS
<input type="checkbox"/> SSRC7752	77" x 34" x 52"	950	208-230/60/1 • 3/4 HP • 13 AMPS	12 AMPS

- If a GFCI circuit is required, a GFCI Breaker Must be used instead of GFCI receptacle.
- Refrigerated cases are designed to operate in a maximum environment of 75°F ambient and 55% relative humidity.
- Due to continuing engineering improvements, specifications are subject to change without notice.



The Signature of Quality

FEDERAL INDUSTRIES
A Standex Company

215 FEDERAL AVENUE, BELLEVILLE, WISCONSIN 53508-9201
PHONE: 800-356-4206 **FAX: 608-424-3234**
EMAIL: geninfo@federalind.com **WEBSITE: www.federalind.com**

