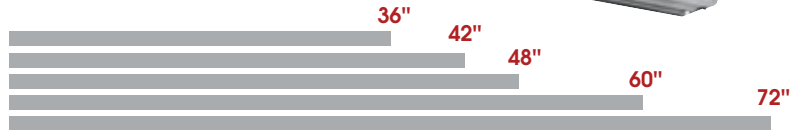




- For interior mounting only with door heights up to 8'



SIZES



FEATURES

- 1/3 Horsepower motors
- Housing, grill and nozzle are 300 grade stainless steel
- Stainless steel blower wheels
- Built-in high/low switch for 2 speed motors
- Heavy duty directional vane
- Voltage: 120V, 1 Phase
- NSF approved up to 7' interior mounting height
- One year warranty on parts
- Low noise levels

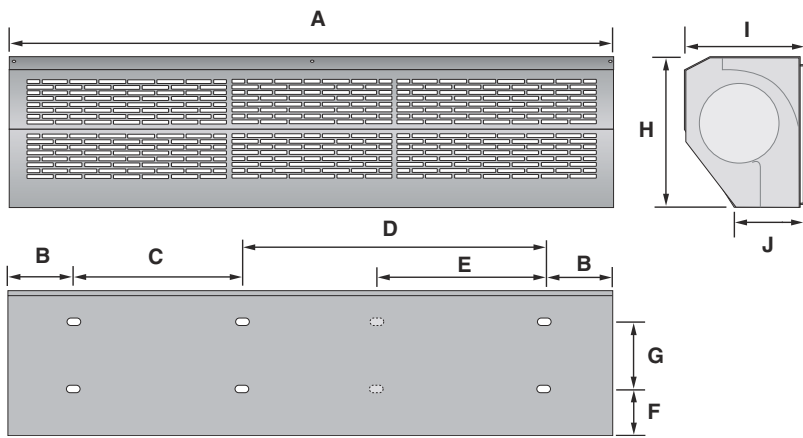
BENEFITS

- Reduces energy costs substantially
- Stops outside drafts, flying insects and airborne pollutants
- Re-circulates warm air inside the building
- Smaller units are perfect for take-out service windows

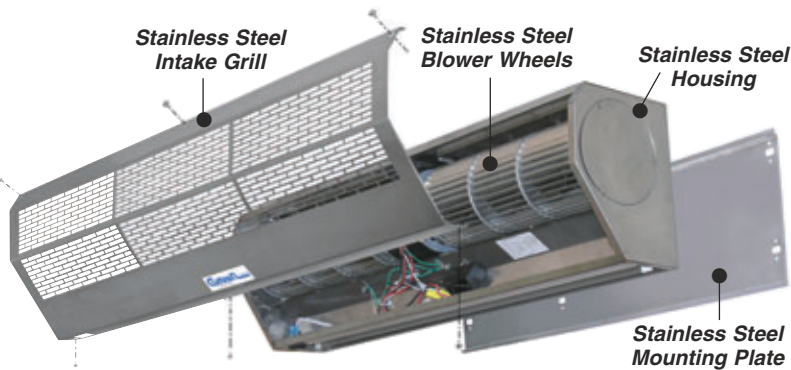
APPLICATIONS

- Bakeries
- Breweries
- Cafeterias
- Restaurants
- Supermarkets
- Warehouses
- Hotels/Motels
- Cold Storage Facilities
- Convenience Stores
- Commercial Kitchens
- Distribution Centers
- Fast Food Restaurants
- Food Processing Plants
- Employee Entrances

| AIR-PRO SERIES – AP | | | | | | | | | | |
|-------------------------|--------------|------|--------------|------|--------------|------|--------------|------|--------------|------|
| MODEL | AP-2-36-1-SS | | AP-2-42-1-SS | | AP-2-48-1-SS | | AP-2-60-1-SS | | AP-4-72-2-SS | |
| Nozzle Width (in.) | 34.50 | | 38.50 | | 46.25 | | 58.00 | | 69.50 | |
| Diameter of Wheel (in.) | 5.5 | | 5.5 | | 5.5 | | 5.5 | | 5.5 | |
| Voltage | 110-120 | | 110-120 | | 110-120 | | 110-120 | | 110-120 | |
| Frequency (Hz) | 60 | | 60 | | 60 | | 60 | | 60 | |
| Net Weight. (lbs.) | 43 | | 47 | | 53 | | 75 | | 86 | |
| No. of Motor(s) | 1 | | 1 | | 1 | | 1 | | 2 | |
| Motor Speeds | High | Low | High | Low | High | Low | High | Low | High | Low |
| Capacity (kw) | .500 | .495 | .650 | .645 | .650 | .645 | .800 | .795 | 1.00 | 0.99 |
| Maximum Air Speed (fpm) | 3150 | 2560 | 3150 | 2560 | 3150 | 2560 | 3150 | 2560 | 3150 | 2560 |
| Air Volume (cfm) | 1220 | 990 | 1360 | 1100 | 1860 | 1520 | 2330 | 1890 | 2440 | 1980 |
| Sound Level (dBA) | 69 | 67 | 71 | 69 | 73 | 71 | 75 | 73 | 75 | 73 |



| DIMENSIONS CHART | | | | | | | | | | |
|------------------|--------|------|-------|-------|-------|----|-------|-----|------|----|
| Model | A | B | C | D | E | F | G | H | I | J |
| AP-2-36-1-SS | 35.5" | 1.0" | 11.5" | 22" | — | 2" | 5.75" | 10" | 8.5" | 5" |
| AP-2-42-1-SS | 39.5" | 1.0" | 11.5" | 22" | — | 2" | 5.75" | 10" | 8.5" | 5" |
| AP-2-48-1-SS | 47.25" | 1.0" | 17.0" | 28" | 17.5" | 2" | 5.75" | 10" | 8.5" | 5" |
| AP-2-60-1-SS | 59" | 1.0" | 22.5" | 33.5" | 22.5" | 2" | 5.75" | 10" | 8.5" | 5" |
| AP-2-72-2-SS | 69.5" | 1.5" | 22.0" | 46.0" | 22.0" | 2" | 5.75" | 10" | 8.5" | 5" |



Easy Adjustments

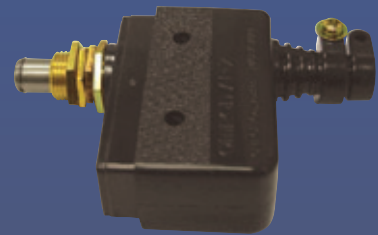
The Air-Pro Series Air Doors are extremely simple to operate. Each unit has a 2 speed motor with a built-in high/low rocker switch. There is also an adjustable directional vane that allows you to regulate the direction of the air flow.



STANDARD EQUIPMENT



All Air-Pro Air Doors run on 120 volts and have single phase motors which means they plug into a regular grounded wall outlet for quick and easy installation.



An Automatic Door Plunger Switch comes with every unit. This switch allows the air door to be instantly turned on when the door is opened.

QUICK SHIP STOCKING PROGRAM

All models of our Air-Pro Air Doors are listed in our Quick Ship Stocking Program which means the item will ship the same day the order is placed.



APPROVED