

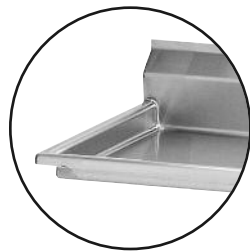


STAINLESS STEEL

FE Series - 18 Gauge Fabricated Sinks



Item #: _____ **Qty #:** _____
Model #: _____
Project #: _____



K-700
Removable
Side Splashes
 Fits Left OR Right Side

FEATURES:

- Backsplash has tile edge for ease of installation.
- Sink bowls are 3/4" coved corner and meet NSF requirements.
- Rolled Rim Edge for additional strength.
- Sink Bowls are 12" deep for greater capacity.
- 9" Backsplash.

CONSTRUCTION:

- All TIG welded.
- Welded areas blended to match adjacent surfaces and to a satin finish.
- Gussets welded to a die-embossed reinforced plate.

MATERIAL:

- 1 5/8" diameter galvanized legs with 1" adjustable plastic bullet feet.
- Entire unit is 18 gauge 304 stainless steel.
- Gussets - galvanized steel.

MECHANICAL:

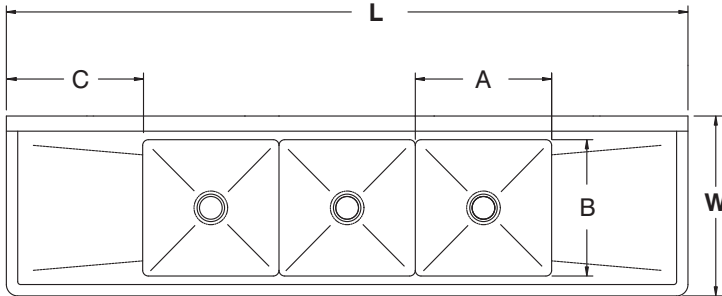
- Supply is 1/2" IPS hot & cold.
- Faucet holes on 8" centers.
- Faucets are not included (**see accessories**).
- Waste drains are 1 1/2" IPS S/S basket type, located in center of sink bowl, and are included.

| | | | | |
|--|--|---|---|--|
| <p>ADVANCE TABCO SMART FABRICATION™ www.advancetabco.com</p> | <p>Customer Service Available To Assist You 1-800-645-3166 8:30 am - 8:00 pm E.S.T.</p> <p>Email Orders To: customer@advancetabco.com. For Smart Fabrication™ Quotes, Email To: smartfab@advancetabco.com or Fax To: 631-586-2933</p> | | | |
| | <p>NEW YORK Fax: (631) 242-6900</p> | <p>GEORGIA Fax: (770) 775-5625</p> | <p>TEXAS Fax: (972) 932-4795</p> | <p>NEVADA Fax: (775) 972-1578</p> |

DIMENSIONS and SPECIFICATIONS

TOL Overall: ± .500" Interior: ± .250"

ALL DIMENSIONS ARE TYPICAL



| ACCESSORIES | Model # | Qty |
|-------------|---------|-----|
| DRAINS | | |
| FAUCETS | | |

| MODEL # | Length L | Width W | Bowl Size A & B | Bowl Depth | Drbd. Length C | # of Drbrds. | Drbrd. Location | Wt |
|--------------------|----------|---------|-----------------|------------|----------------|--------------|-----------------|----------|
| FE-1-1515-X | 20.25" | 20.75" | 15" x 15" | 12" | N/A | 0 | None | 38 lbs. |
| FE-1-1812-X | 23" | 23.75" | 18" x 18" | 12" | N/A | 0 | None | 42 lbs. |
| FE1-1812-18RorL-X | 38 1/2" | 23.75" | 18" x 18" | 12" | 18" | 1 | R or L | 57 lbs. |
| FE1-1812-18RL-X | 54" | 23.75" | 18" x 18" | 12" | 18" | 2 | R & L | 65 lbs. |
| FE-1-1824-X | 23" | 29.75" | 18" x 24" | 14" | N/A | 0 | None | 60 lbs. |
| FE-1-1824-24RorL-X | 45" | 29.75" | 18" x 24" | 14" | 24" | 1 | R or L | 105 lbs. |
| FE-1-2424-X | 29" | 29.75" | 24" x 24" | 12" | N/A | 0 | None | 90 lbs. |
| FE-2-1812-X | 41" | 23.75" | 18" x 18" | 12" | N/A | 0 | None | 65 lbs. |
| FE2-1812-18RLX | 72" | 23.75" | 18" x 18" | 12" | 18" | 2 | R & L | 84 lbs. |
| FE-3-1515-PX | 50" | 20.75" | 15" x 15" | 12" | N/A | 0 | None | 95 lbs. |
| FE-3-1515-15RorLX | 62.5" | 20.75" | 15" x 15" | 12" | 15" | 1 | R or L | 105 lbs. |
| FE-3-1515-15RL-X | 75" | 20.75" | 15" x 15" | 12" | 15" | 2 | R & L | 115 lbs. |
| FE-3-1620-18RorLX | 68.5" | 25.75" | 16" x 20" | 12" | 18" | 1 | R or L | 140 lbs. |
| FE3-1620-18RLX | 84" | 25.75" | 16" x 20" | 12" | 18" | 2 | R & L | 105 lbs. |
| FE-3-1812-X | 59" | 23.75" | 18" x 18" | 12" | N/A | 0 | None | 90 lbs. |
| FE-3-1812-18RorL-X | 74 1/2" | 23.75" | 18" x 18" | 12" | 18" | 1 | R or L | 102 lbs. |
| FE3-1812-18RLX | 90" | 23.75" | 18" x 18" | 12" | 18" | 2 | R & L | 110 lbs. |
| FE-3-1824-24RorLX | 80.5" | 29.75" | 18" x 24" | 14" | 24" | 1 | R or L | 150 lbs. |
| FE-3-1824-24RLX | 102" | 29.75" | 18" x 24" | 14" | 24" | 2 | R & L | 250 lbs. |
| FE-3-2414-24RLX* | 120" | 29.75" | 24" x 24" | 14" | 24" | 2 | R & L | 300 lbs. |

* Requires Two Faucets

SPACESAVER

| MODEL # | Length L | Width W | Bowl Size A & B | Bowl Depth | Drbd. Length C | # of Drbrds. | Drbrd. Location | Wt |
|------------------------------|----------|---------|-----------------|------------|----------------|--------------|-----------------|----------|
| FE-3-1014-15RLX ¹ | 60" | 19.75" | 10" x 14" | 10" | 15" | 2 | R & L | 85 lbs. |
| FE-3-1416-12RLX | 66" | 21.75" | 14" x 16" | 12" | 12" | 2 | R & L | 130 lbs. |

¹10" Deep Bowls

